



# Limitless Potential Breakfast

A Morning of  
Mentorship,  
Leadership &  
Community  
Impact



**April 17, 2026 ✨ 8:00 – 10:00 AM ✨ Lincoln Shoe Company**

Sponsor Level	Presenting Sponsor	On-Stage Recognition	Exclusive Social Feature	Event Signage	Group Social Recognition	Website Recognition	Table Signage	Tickets
<b>\$4,600</b> 20 Girls	✓	✓	✓	✓	✓	✓	✓	<b>VIP</b> Reserved Table for 10
<b>\$2,530</b> 1 Team			✓	✓	✓	✓	✓	<b>VIP</b> Reserved Table for 10
<b>\$1,000</b> 28 Pairs of Sneakers					✓	✓	✓	Reserved Table for 10
<b>\$500</b> First Aid & CPR Certification						✓	✓	5 Tickets
<b>\$75</b> Ticket or Pay What You Can								1 Ticket non-sponsorship
<b>\$25</b> Student Ticket								1 Ticket non-sponsorship

The Limitless Potential Breakfast is a leadership-focused morning that brings business and community leaders together to invest in the next generation through mentorship, confidence-building, and meaningful connection.

Beginning in January, five women leaders from Lancaster and Lebanon Counties are paired with a high school Junior Coach for a guided mentorship experience focused on leadership, civic engagement, and growth.

The April breakfast culminates this journey with a facilitated panel conversation, where mentors and girls share how mentorship and leadership visibility build confidence and skills that extend into school, work, and community life—offering corporate partners a meaningful opportunity to support leadership development, workforce readiness, and long-term community impact. Guests will leave with a firsthand understanding of how intentional mentorship empowers the next generation of female leaders to bridge the gap between personal confidence and professional readiness.

**Questions or Sponsorship Inquiries?**

✉ [cfoster@gotrlancaster.org](mailto:cfoster@gotrlancaster.org)



# MENTORSHIP IN ACTION

Five women leaders. Five students. One powerful mentorship journey.



**Salena J. Coachman** is a people and workforce development leader dedicated to building strong, inclusive organizations and communities. She serves as Vice President of Talent Sustainability, Talent Acquisition & Development at Armstrong World Industries, where she leads people strategy, learning, and community engagement. Salena brings more than 20 years of experience in talent and culture leadership and is actively involved in the Lancaster community through nonprofit and workforce boards.

MODERATOR & FACILITATOR



**Jassinya Alvarado Padilla** is a lifelong Lancaster resident and a leader in educational access and equity. She serves as the Director of Educational Access and Opportunity for the School District of Lancaster, leading districtwide efforts focused on inclusion, belonging, and systemic change. Jassinya also serves on Governor Josh Shapiro's Advisory Commission on Latino Affairs and is a bilingual advocate for students and communities.

EDUCATION EQUITY & ACCESS



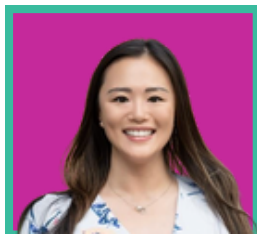
**Kat DeSantis** is a policy leader and a changemaker focused on collective empowerment and civic engagement. As Policy Director for 10,000 Friends of Pennsylvania, she leads statewide advocacy on housing, transportation, and community vitality. Kat represents young Pennsylvanians on Governor Josh Shapiro's Advisory Commission on Next Generation Engagement and volunteers with Girls on the Run Lancaster-Lebanon.

YOUTH VOICE & CIVIC ENGAGEMENT



**Laurie Funk** is a community builder whose work spans biomedical research, youth ministry, and nonprofit leadership. She is the co-founder and president of Chestnut Street Community Center in Lebanon, leading initiatives focused on emergency housing, education, and food access. Laurie supports Girls on the Run Lancaster-Lebanon and was appointed to Pennsylvania's Advisory Commission for Women.

COMMUNITY BUILDING & SERVICE



**Cindy Lam** is an entrepreneur, community leader, and advocate who believes success is most meaningful when it uplifts others. She is the co-owner of Silantra Asian Street Kitchen and a local bakery, using her businesses as platforms for community impact. Cindy also serves as co-founder and president of the Lancaster Asian American and Pacific Islander Organization, a commissioner on Governor Josh Shapiro's Commission on Asian American and Pacific Islander Affairs, and a Manheim Township School Board Director.

COMMUNITY ADVOCACY & ENTREPRENEURSHIP

## WHY MENTORSHIP MATTERS

At Girls on the Run, mentorship helps bring our mission to life.  
When girls see leadership up close, they begin to recognize it within themselves.