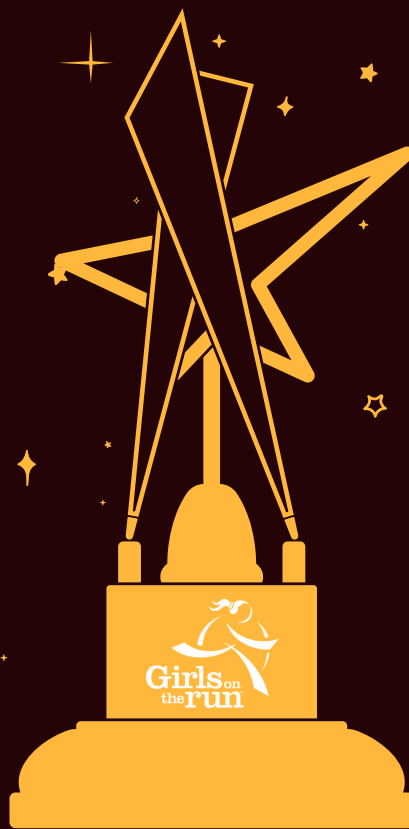


GIRLS ON THE RUN

HEART OF KANSAS

Presents..

BREWS, CLUES & RUNNING SHOES



SATURDAY  
APRIL 12, 2025  
1:00-6:00PM  
DOWNTOWN WICHITA

AMAZING RACE MEETS SCAVENGER HUNT MEETS "RUN" MEETS "PUB CRAWL."  
YOU NAME IT, WE'VE GOT AT THIS EVENT LIKE NONE OTHER IN WICHITA!  
REGISTER YOUR TEAM AT [WWW.GIRLSONTHEKRUNKS.ORG](http://WWW.GIRLSONTHEKRUNKS.ORG)  
\*21+ OLDER TO PARTICIPATE\*

# GIRLS ON THE RUN

## HEART OF KANSAS

Presents...

# BREWS, CLUES & RUNNING SHOES SPONSORSHIP OPPORTUNITIES:

**Presenting Sponsor:** (1 available) \$3,000 Includes: Exclusive placement of logo on all marketing and promotional materials (including website, t-shirt, finishers gift, and bibs) as well as recognition as presenting sponsor on signage, press release, and social media. Ability to place company banner and table at the starting line and after-party event; complimentary registration for TWO (2) Teams.

**Event/Afterparty Sponsor:** (2 available) \$1,500 Includes: Logo placement on all marketing and promotional materials, (including website and t-shirt) ability to place own banner at the after-party event; ability to provide marketing/promotional materials for participants in swag bags and complimentary registration for ONE (1) Team.

**Shoe Drive Sponsor:** \$750.00 Includes YOUR company logo/signage at the drop off location for our Shoe Drive Fundraiser, which will be at the "starting line" at Brews Clues. Bring your photobooth props, fun game or challenge and make it your own! Teams will be stopping by to drop off gently used shoes to earn extra points! Your company also can be a Drop-Off Spot for the duration of the fundraiser in the Spring!

**Tech Sponsor:** \$500.00 Includes: Sponsorship of App that is used by 300 participants, logo placement on App and all marketing and promotional materials, option to add "follow/like" social media prompts as a challenge/clue.

**Challenge Sponsor:** \$250.00 Includes: Small logo placement on all marketing and promotional materials (including website and t-shirt); ability to host a course clue, ability to provide marketing/promotional materials for all participants, opportunity to promote drink/food specials at your stop that will be included on the App that 300 participants will use on race day!

**Community Supporter:** \$100.00 Includes: Social Media recognition, company name on promotional materials.

**In-kind Sponsor:** Donate a raffle basket for the Afterparty! (Prize valued at \$200.00). Includes: Signage at the afterparty, mentions on social media



**DEADLINE TO SECURE SPONSORSHIP  
MARCH 14, 2025**

Contact Stephanie@girlsontherun.org to learn more!